



Honda Civic Type R

Down Pipe

Installation Instructions

XFORCE RECOMMENDS AN AUTHORISED PROFESSIONAL TO INSTALL ALL PRODUCTS

WARNING: When working on any vehicle exercise extreme caution. Please allow the vehicles exhaust system to be cool enough to touch before removal. Failing to do so may result in severe burns. If working without a hoist refer to the vehicles manual to check correct lifting specifications. Always wear safety glasses, protective gloves and ensure your working in a safe area. Serious injury or death can occur if the correct safety measures are not followed.

Attention: Please read the instructions carefully. XFORCE will only warrant manufacturing faults. This does not extend to damage or breakage due to incorrect fitment.



Required Tools and Equipment

1. Spanners and Sockets required 10mm, 12mm, 13mm, 14mm, 15mm, 16mm
2. 3/8" Ratchet
3. 100mm, 200mm long 3/8 Extension bar
4. Side Cutters
5. Razor blade/box cutter
6. Can of spray lubricant
7. Tube of O2 Sensor safe sealant for the 2 bolt Gasket and Slip Joint
8. 2-3 Rags for excess sealant
9. Safety Glasses or Goggles
10. Protective Gloves
11. Safety Boots



Step 1

The entire fitting process must be conducted by a professionally trained technician (this also includes hoist operation).

Raise vehicle on a 2 post hoist making sure hoist arms are in the correct lifting positions (as per owners manual) and that you or someone else isn't under the vehicle while hoist is moving up or down.

Once the Vehicle is at a workable height engage the hoist safety locks.



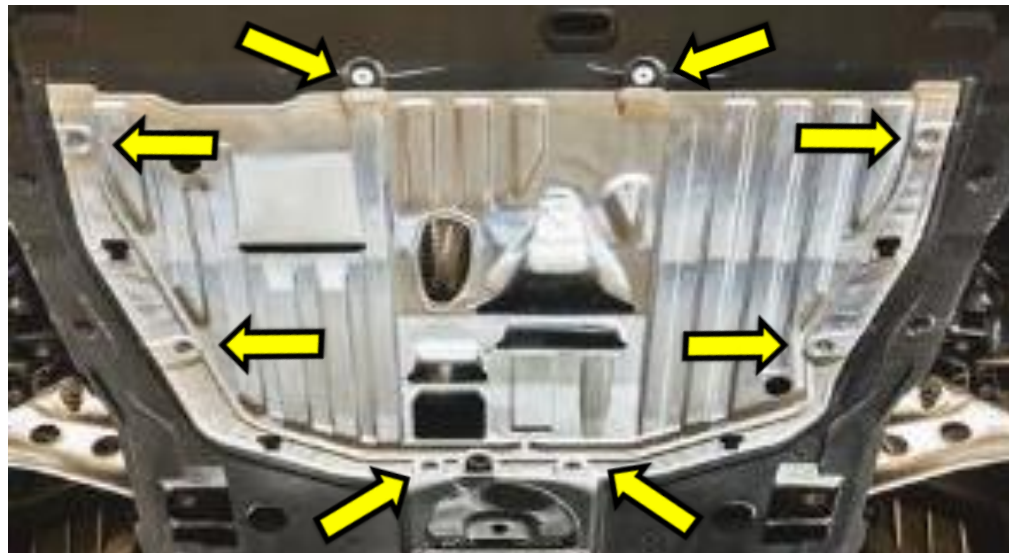


Step 2

Remove 2 x Phillips head screws at the front edge of the belly pan

Remove 6 x plugs with a flat head screwdriver

Slide belly pan rearward to release it from 4 x tabs





Step 3

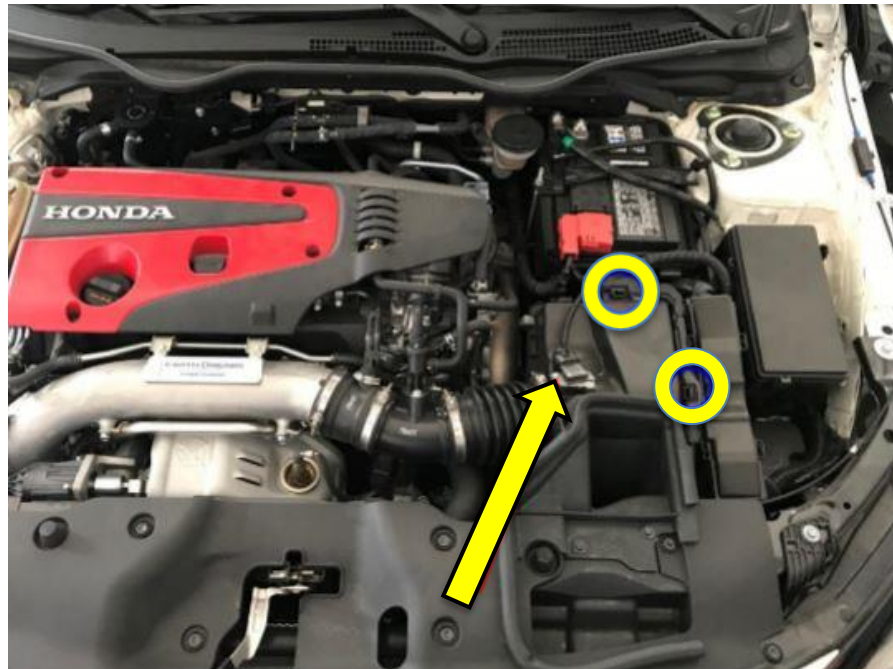
Remove 3 x nuts with a 14 mm socket between the down pipe and the front pipe, 2 x 14 mm bolts securing the support brackets to the frame and 2 x 14 mm bolts holding the support brackets to the downpipe





Step 4

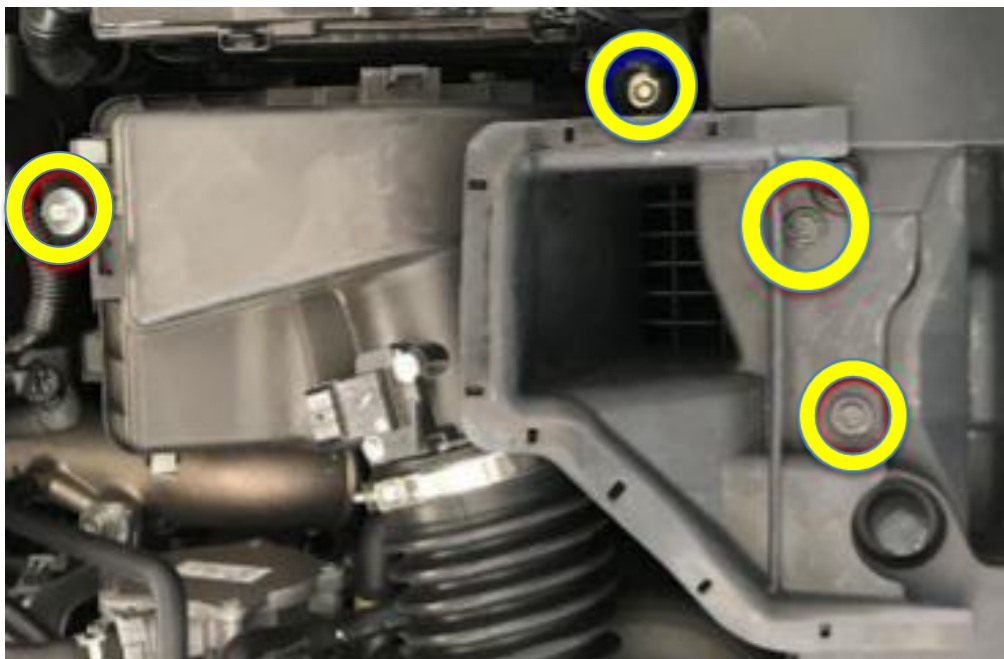
Unplug the MAF sensor from the intake tube and unclip the sensor wiring from the air box





Step 5

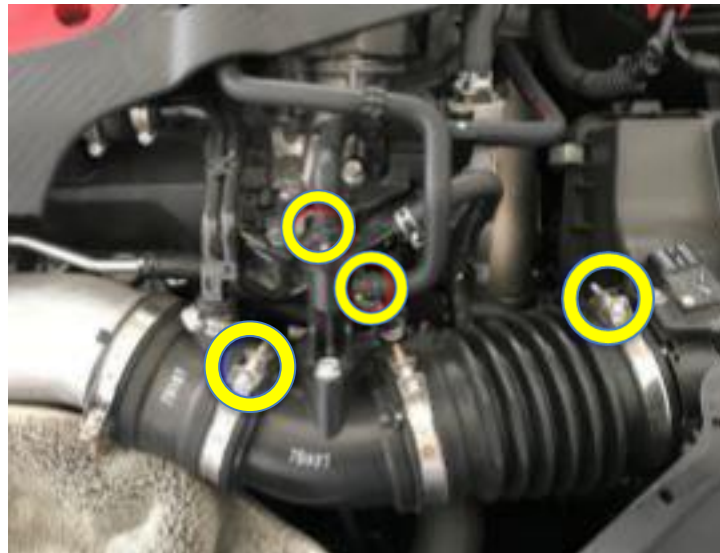
Remove the rubber seal, 4 x 10 mm head bolts Using a 3/8 inch socket and 200mm extension will be required to access the lower 10 mm head bolt





Step 6

Compress the clamps on the jet valve hoses using channel lock pliers and disconnect the hoses from the black intake tube. A flat head screwdriver can help push hoses off of their ports (being careful not to break them). Loosen the hose clamps with a Phillips head screwdriver and remove this section of the black intake tube.





Step 7

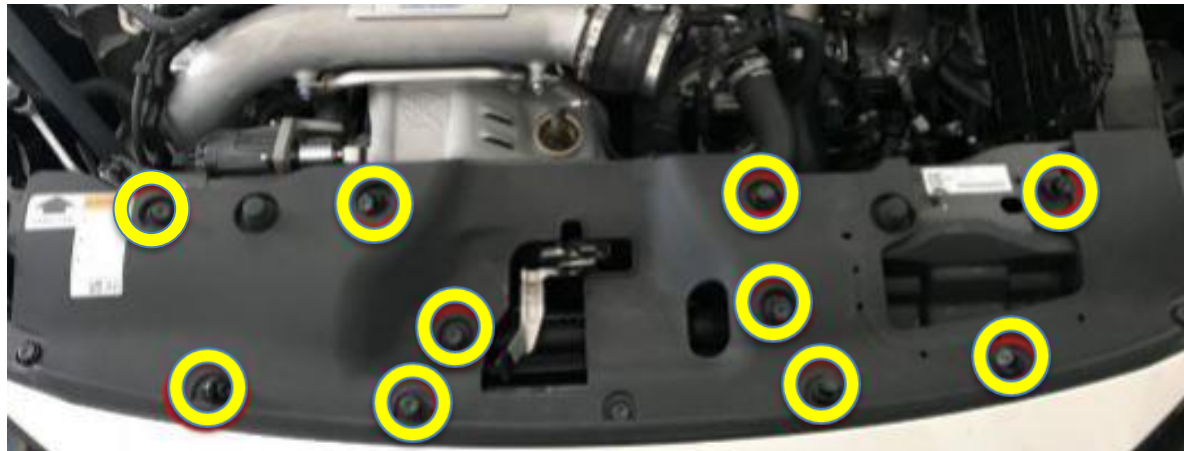
Remove air box from the vehicle. Note – there is a metal spire and rubber grommet on the underside of the air box that will provide some resistance when removing the air box.





Step 8

Unclip 10x push clips securing the radiator cover with a flathead screwdriver and remove. Take care not to drop any in the engine bay as they can be difficult to retrieve.





Step 9

Remove 5 x 10mm head bolts





Step 10

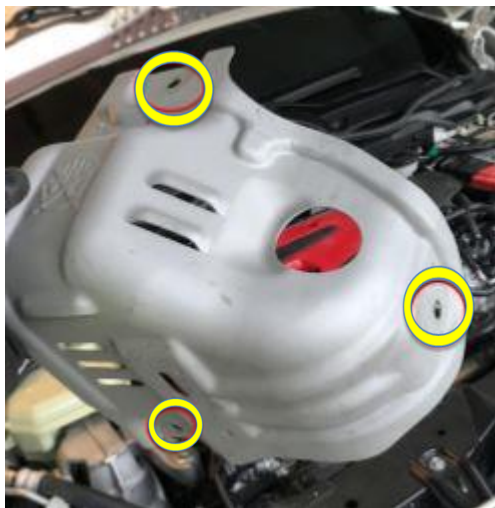
Remove 2 x 12mm head bolts, the rear bolt can easily be accessed with a 100mm socket extension, but the forward most bolt is difficult to reach due to the plumbing and wires in the area so a swivel joint is recommended





Step 11

Remove the top O2 sensor using a 22 mm slotted deep socket or O2 sensor tool. The lower O2 sensor can be left in place and removed after the downpipe is out of the vehicle. Remove 3 x 12 mm head bolts and remove the heat shield





Step 12

Allow a sufficient amount of time for the upper down pipe bolts to soak in penetrating liquid. It is recommended to allow 2-3 hours for this process to mitigate the chance of breaking the studs or bolts on the turbo.

Remove the 2 x bolts and 2 x nuts with a 14 mm socket from the turbo.

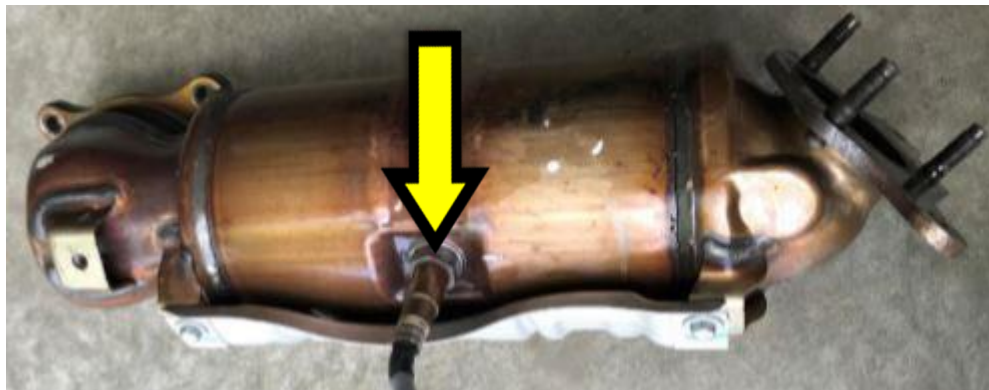




Step 13

Remove the downpipe from the engine bay. The process used for this guide was to slide the downpipe off of the studs at the turbo, which then allows for the downpipe to be pulled vertically upward to release the lower studs from the front pipe. The downpipe was removed through the top of the engine bay for this guide but can be removed from underneath the vehicle as well.

Once the downpipe is out remove the lower O2 sensor and fit it to the Xforce downpipe.





Step 14

Refit the new Xforce down pipe by following these steps in the reverse direction

Step 13, Step 12, Step 11, Step 10, Step 9 and so on until the fitment is completed.

Note: When you first start your vehicle after the installation of your new XFORCE Performance Exhaust System, there may be some smoke and fumes coming from the system. This is a protective oil based coating used in the manufacturing of mandrel bent performance exhaust tubing. This is not a problem and will disappear within a very short period of time after the exhaust has reached normal operating temperatures.



Step 15

Drive vehicle for 10mins and re tension all nuts, bolts and clamps