



Toyota Yaris GR (GXPA16R) NON-Varex Cat Back Installation Instructions

XFORCE RECOMMENDS AN AUTHORISED PROFESSIONAL TO INSTALL ALL PRODUCTS

WARNING: When working on any vehicle exercise extreme caution. Please allow the vehicles exhaust system to be cool enough to touch before removal. Failing to do so may result in severe burns. If working without a hoist refer to the vehicles manual to check correct lifting specifications. Always wear safety glasses, protective gloves and ensure your working in a safe area. Serious injury or death can occur if the correct safety measures are not followed.

Attention: Please read the instructions carefully. XFORCE will only warrant manufacturing faults. This does not extend to damage or breakage due to incorrect fitment.



Parts List

1. ES-TY21 C1
2. 1 x 3 1/8" Clamp
3. ES-TY21 C2
4. 2 x 2 bolt Gasket and Nuts and Bolts
5. ES-TY21 R (Rear muffler)



Required Tools and Equipment

1. Spanners and Sockets required 13mm, 14mm, 15mm, 16mm
2. 3/8" Ratchet
3. 6" long 3/8 Extension bar
4. Can of spray lubricant
5. Tube of O2 Sensor safe sealant for the 2 bolt Gasket and Slip Joints
6. 2-3 Rags for excess sealant
7. 1/2" Tension Wrench with 15mm deep socket, set to 80 Foot Pounds
8. Safety Glasses or Goggles
9. Protective Gloves
10. Safety Boots

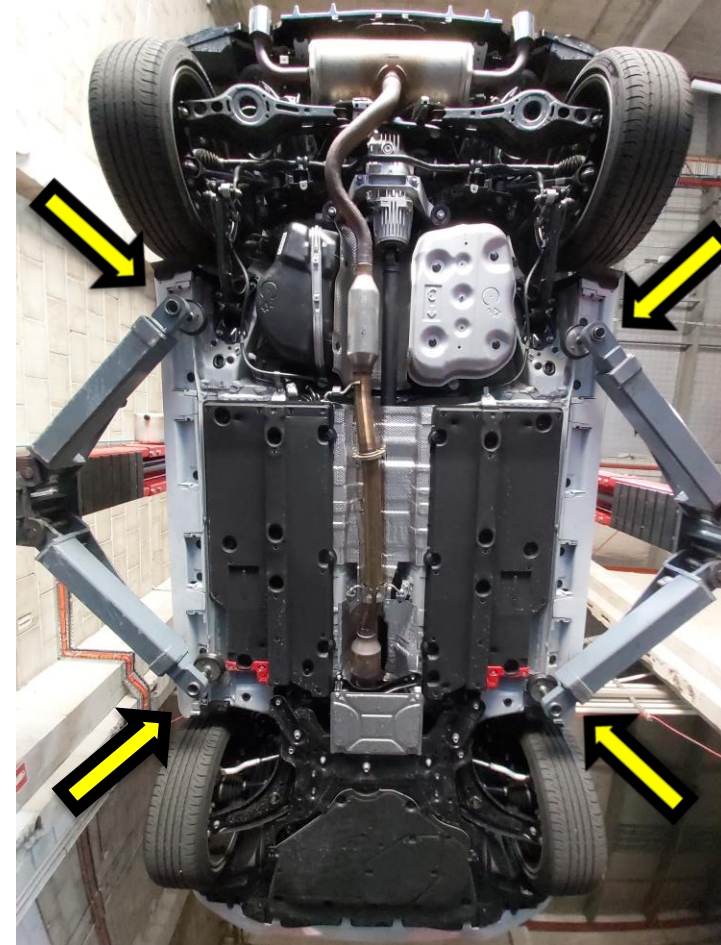


Step 1

The entire fitting process must be conducted by a professionally trained technician (this also includes hoist operation).

1 Raise vehicle on a 2 post hoist making sure hoist arms are in the correct lifting positions (as per owners manual) and that you or someone else **IS NOT** under the vehicle while hoist is moving. Once the Vehicle is at a workable height engage the hoist safety locks.

* VAREX Rear Exhaust Pictured





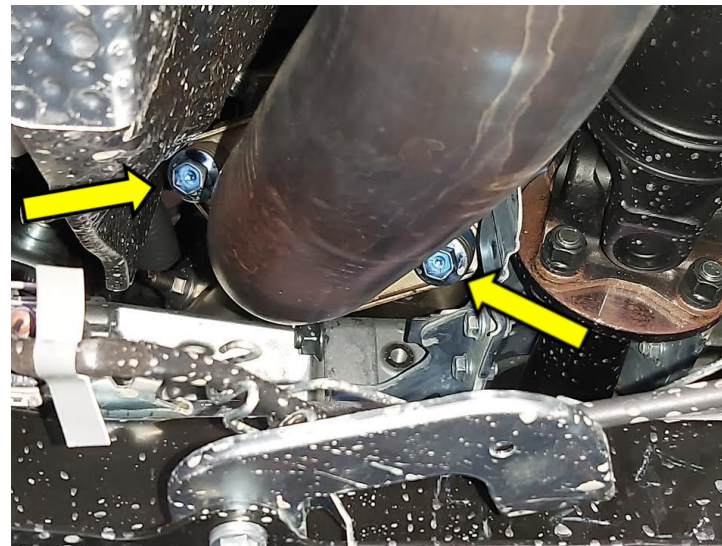
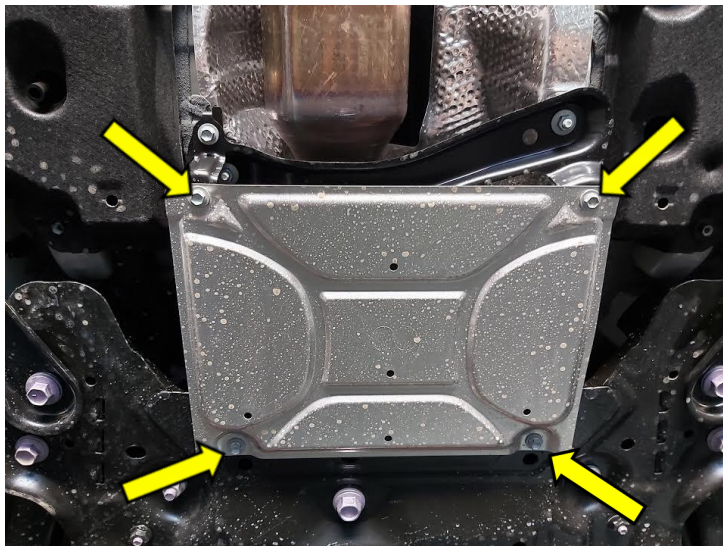
Step 2

Please make sure you are wearing safety equipment as listed in Required Tools/Equipment.

Unbolt the 4 x 10mm bolts holding the steel cover then remove.

Unbolt the 14mm spring loaded bolts on the ball flare at the base of the cat.

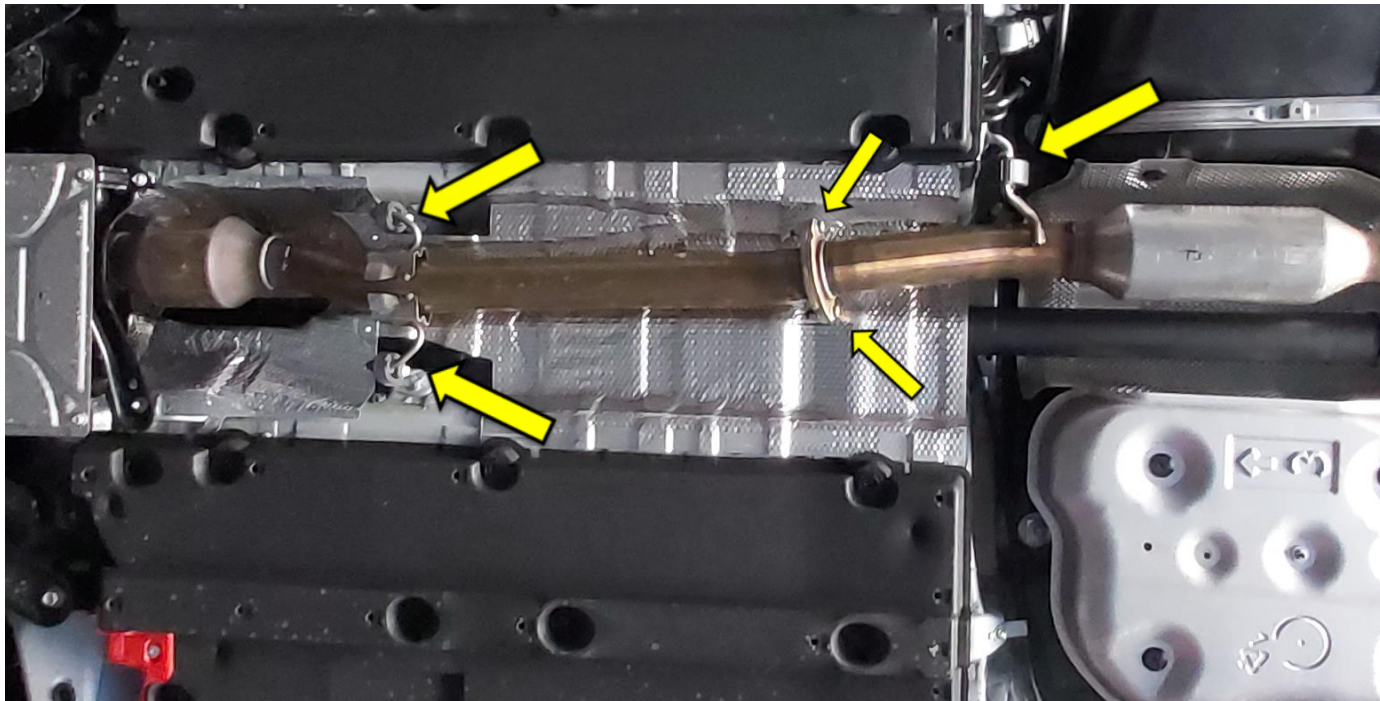
Unbolt the O2 sensor using a 7/8" or 22mm spanner





Step 3

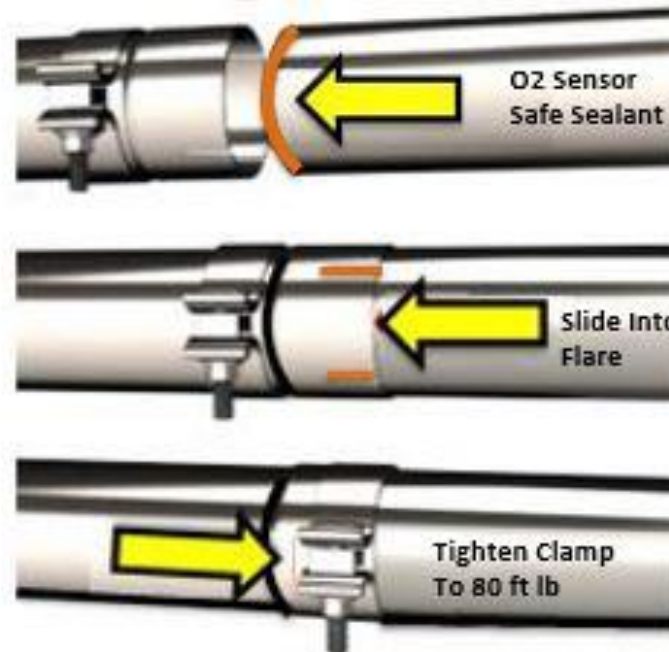
Lubricate the 3 centre rubbers and the 2 rear muffler rubbers the unbolt the 2 x 14mm nuts and bolts at the middle flange then remove the 2 exhaust pieces





Step 4

- 1 Fit the TY21 C1 to the base of the cat and replace the 14mm spring loaded bolts
- 2 Refit the O2 sensor and tighten with the 7/8" or 22mm spanner
- 3 Slide the clamp over the slip joint inlet on the TY21 C2 and then slide over the C1 and fit the rubbers then position the clamp and tighten as per diagram.





Step 5

1 Hang the rear muffler on the rear rubbers.

2 Fit the TY21 C3, the 2 bolt gaskets as per diagram and the 4 x nuts and bolts then tighten.

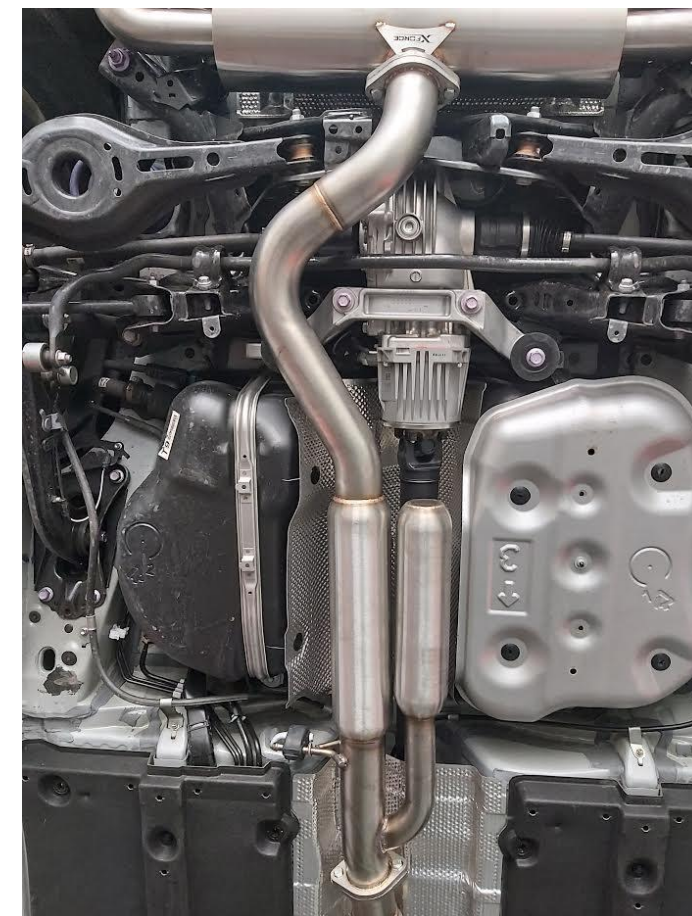
REFER TO DIAGRAM for gasket installation

3 Fit the 2 x tips, position and tighten the 10mm clamps.

* VAREX Rear Exhaust Pictured



* VAREX Rear Exhaust Pictured





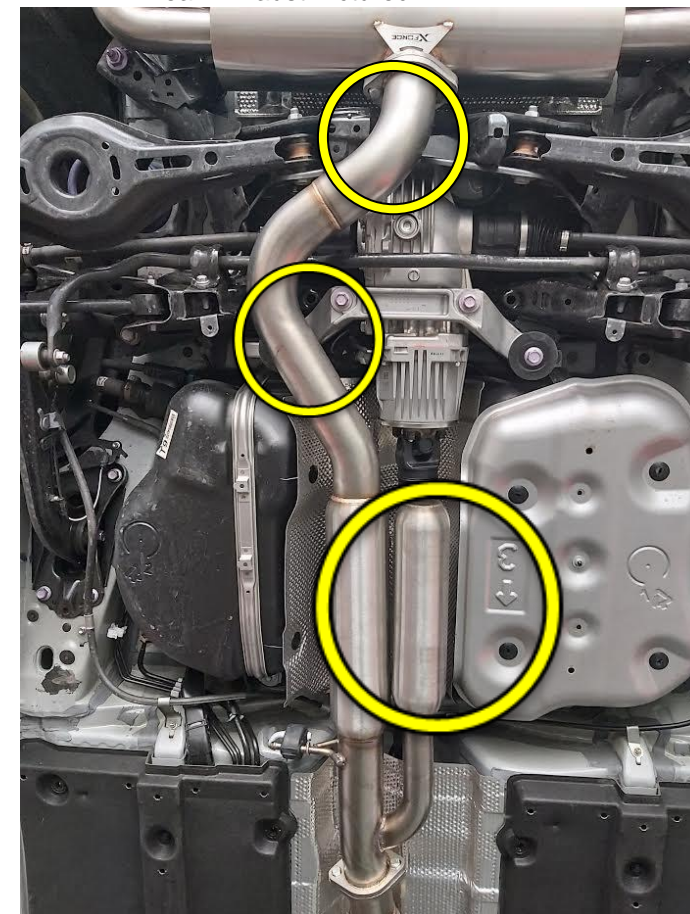
Critical Points to Check

- 1 Check these points before tightening for potential rattle issues.
- 2 If the muffler hanger with the arrow is too close to the chassis hanger where the rubber mounts, you will need to slide (at the slip joint near the engine) the system back towards the rear bar .

* VAREX Rear Exhaust Pictured



* VAREX Rear Exhaust Pictured





Step 6

1 Check the rear muffler and tips are level and even, check the gaps at all points of the exhaust are enough and haven't moved in the tightening process.



Note: When you first start your vehicle after the installation of your new XFORCE Performance Exhaust System, there may be some smoke and fumes coming from the system. This is a protective oil based coating used in the manufacturing of mandrel bent performance exhaust tubing. This is not a problem and will disappear within a very short period of time after the exhaust has reached normal operating temperatures.



Step 13

Drive vehicle for 10mins, Return to **Step 6**, retention all nuts, bolts and enjoy the driving experience your new Xforce System provides.

Note: When you first start your vehicle after the installation of your new XFORCE Performance Exhaust System, there may be some smoke and fumes coming from the system. This is a protective oil based coating used in the manufacturing of mandrel bent performance exhaust tubing. This is not a problem and will disappear within a very short period of time after the exhaust has reached normal operating temperatures.