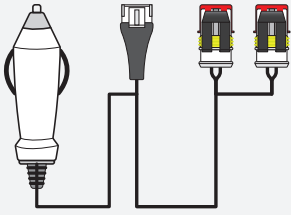
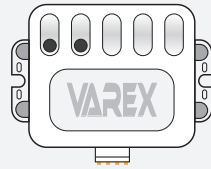


## CONTENTS:



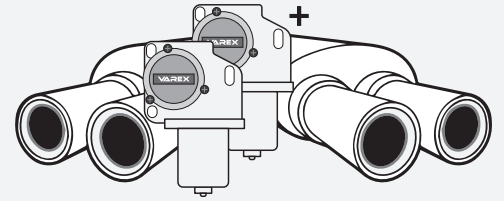
DUAL MOTOR  
WIRING HARNESS



VAREX  
CONTROL BOX



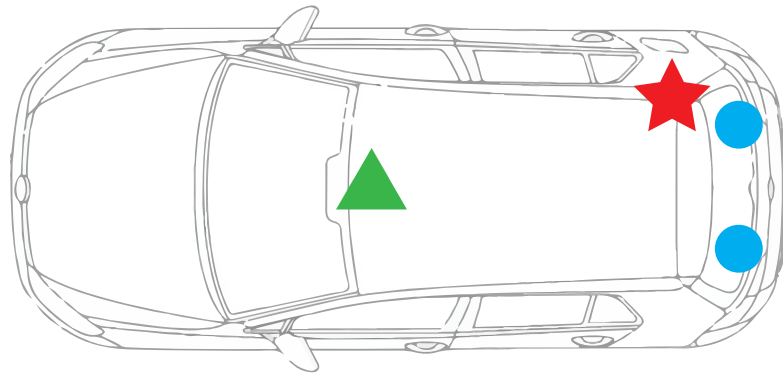
2x WIRELESS  
REMOTE CONTROL



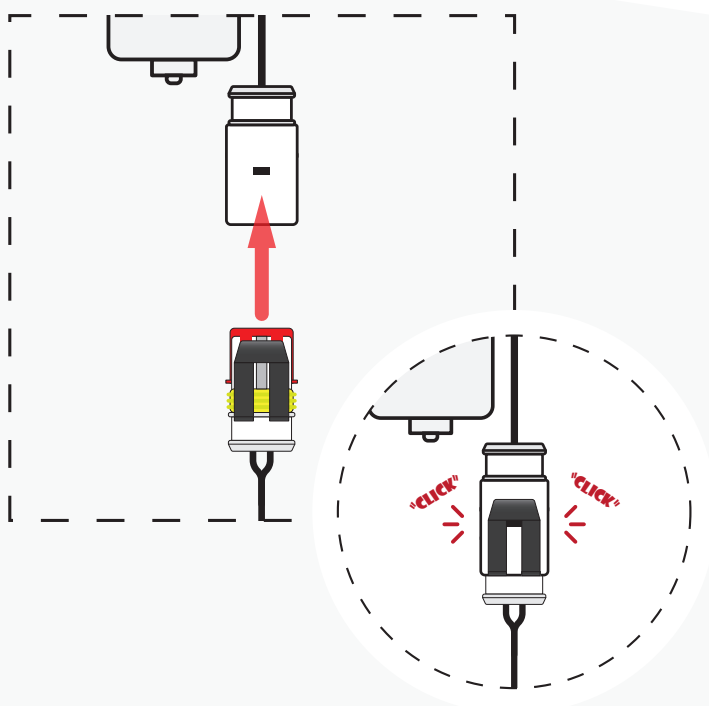
VAREX MOTOR/  
VAREX MUFFLER

## STEP ONE

- ★ Varex Control Box
- ▲ 12V Power Source
- Varex Mufflers



Before starting, plan where you will keep the varex control box. Depending on the vehicle you have, this may be located either at the front or rear, respective of where the 12V power outlet and Varex muffler is located.



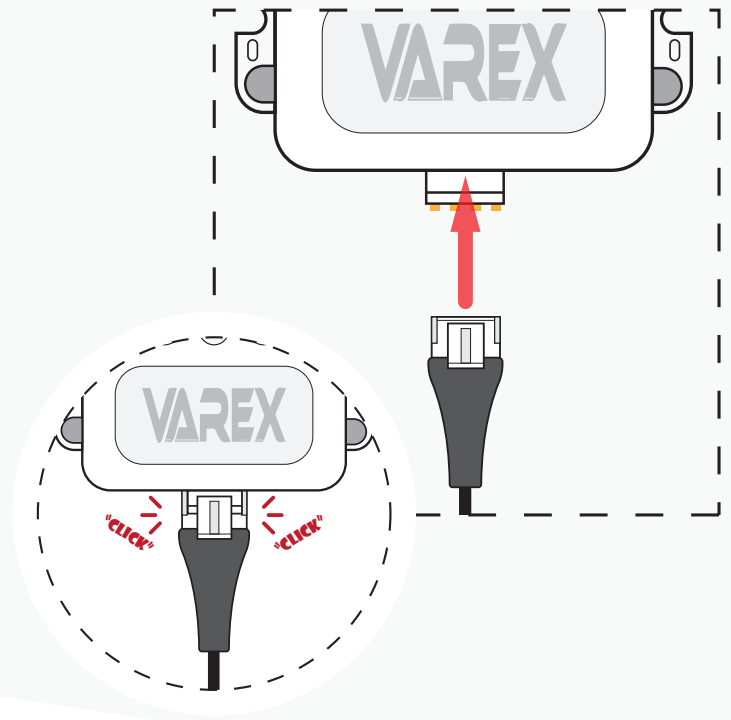
## STEP TWO

Start by guiding both red tipped plugs for the Varex mufflers/motors through a firewall, grommet/hole from inside the cabin to the outside of the car. Once you have clear access, securely plug all connectors together.

### STEP THREE

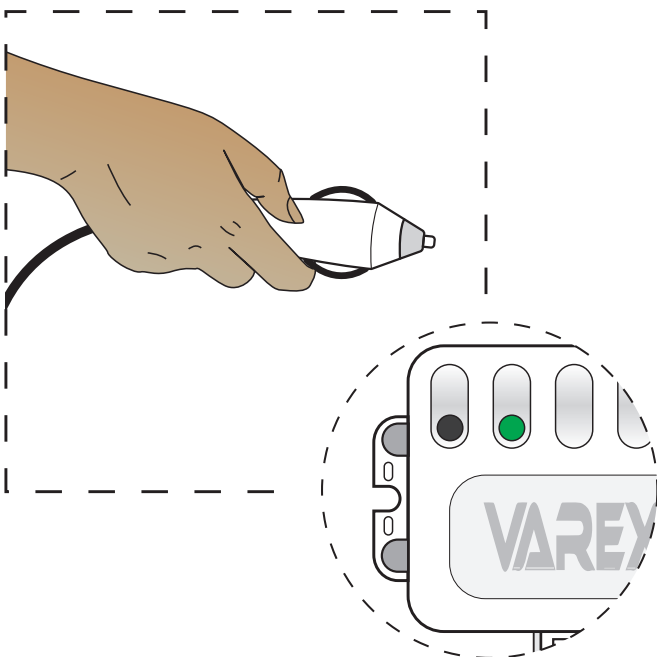
Once the cable for the Varex motor/muffler is plugged in, next plug in the white 4-pin connector to the Varex control unit. Secure the unit in a safedry space.

**(Please note, the control unit is not designed to endure temperatures within the engine bay.)**



### STEP FOUR

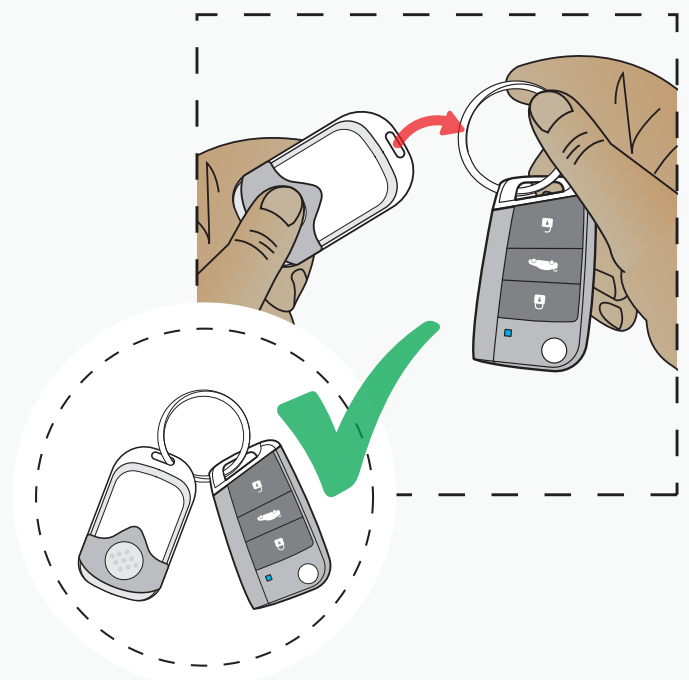
The final connection remaining is the power source. Utilising a 12v socket from the most convenient location inside the vehicle, plug in the power connector. The varex control unit should now show an idle green light indicating a live power connection. once you confirm everything is right, tuck all excess wiring neatly within panel trims to avoid any hazards.



### STEP FIVE

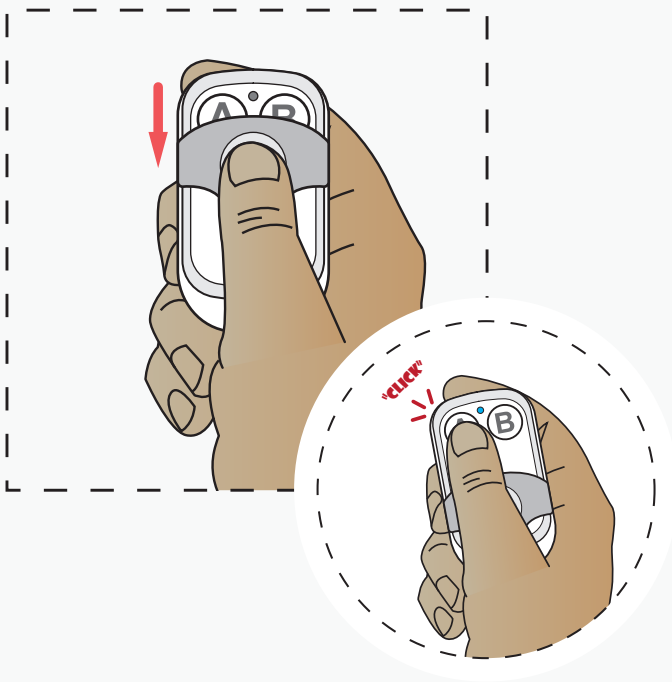
Its now time to get familiar with the remote controls. Supplied in the kit is 2x remotes for your convenience. Using one, attach it to your key set or keep in the vehicle at all times to prevent loosing them.

**(Please note: If both remotes are lost, a new VK01 Kit will need to be issued.)**



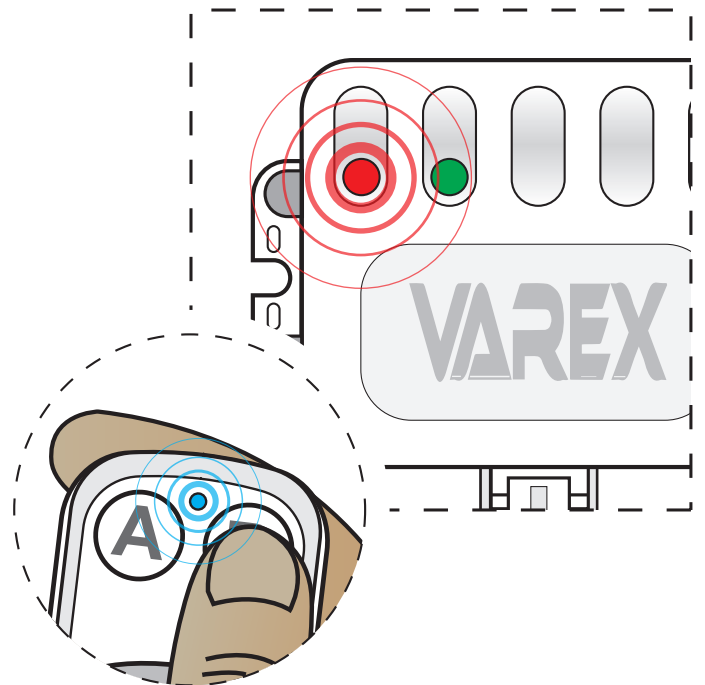
## STEP SIX

Slide the cover down to expose the buttons "A" & "B". Some remotes are calibrated to have open and close on either of those buttons, so test both to make sure you hear the varex motors operate on the vehicle before starting it.



## STEP SEVEN

When either of these buttons on the remote control are pressed, a small LED indicator will light, which will give you an indication that the battery is live and a signal is imminent. The same feedback is also visible on the Varex control box, when the remote control sends the signal, real time indication will show that the signal has been received.



## FINAL STEP

Now that your system is completely installed, its time to finally check its operation is normal. Start your vehicle and have the engine running to hear the audible differences when you push "A" and "B" on the Remote control. Youll notice the Varex exhaust will be significantly louder on one setting, and quieter on the other when switched respectively.

