



VW Golf MK7 & 7.5 GTI

KIT B

Installation Instructions

XFORCE RECOMMENDS AN AUTHORISED PROFESSIONAL TO INSTALL ALL PRODUCTS

WARNING: When working on any vehicle exercise extreme caution. Please allow the vehicles exhaust system to be cool enough to touch before removal. Failing to do so may result in severe burns. If working without a hoist refer to the vehicles manual to check correct lifting specifications. Always wear safety glasses, protective gloves and ensure your working in a safe area. Serious injury or death can occur if the correct safety measures are not followed.

Attention: Please read the instructions carefully. XFORCE will only warrant manufacturing faults. This does not extend to damage or breakage due to incorrect fitment.



Part Number List

1. ES-VW08F1
2. ES-VW08-H
3. ES-CRP21-300 (Tuning Pipe)
4. ES-CATB21-300 (Cat Converter)
5. ES-VW08-KITB-C1 (For Factory Cat Back)
6. ES-VW08F2 (For Xforce Cat Back)
7. 3 X GASKETS
8. 6 X 10MM BOLTS AND NUTS.

You may need to Tune the Vehicle after installation of this down pipe due to possible engine light for rear O2 sensor parameters and rich fuel mixture

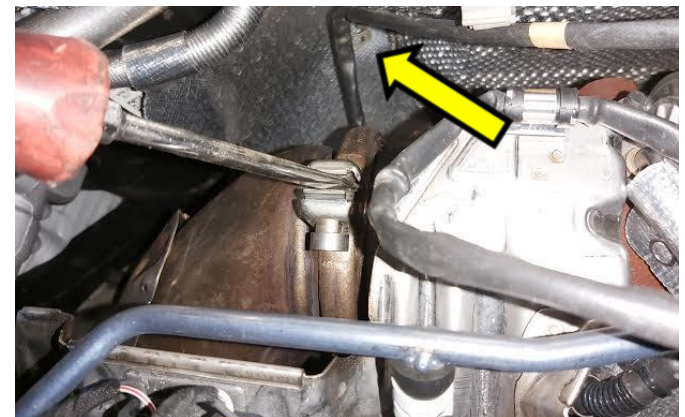
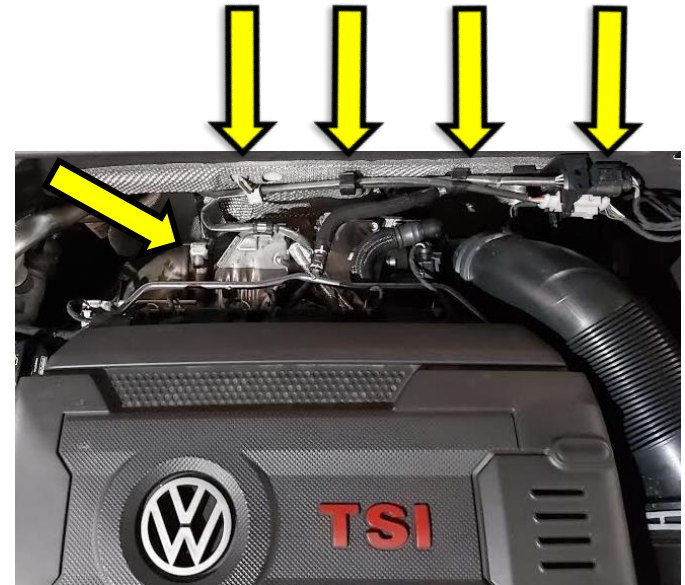


Step 1

1 Unbolt The Vband Clamp At The Down Pipe and Turbo with a 6mm allen key and use a screwdriver to release the clamp

2 Unplug (Black plug) the post cat O2 sensor and remove wiring from the 4 holders in the firewall

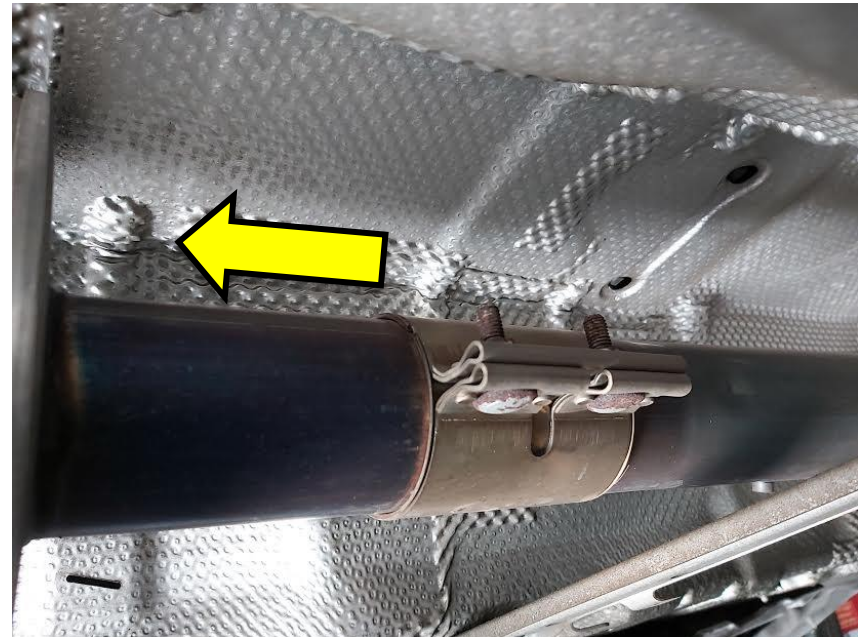
3 Raise Car On Vehicle Lift





Step 2

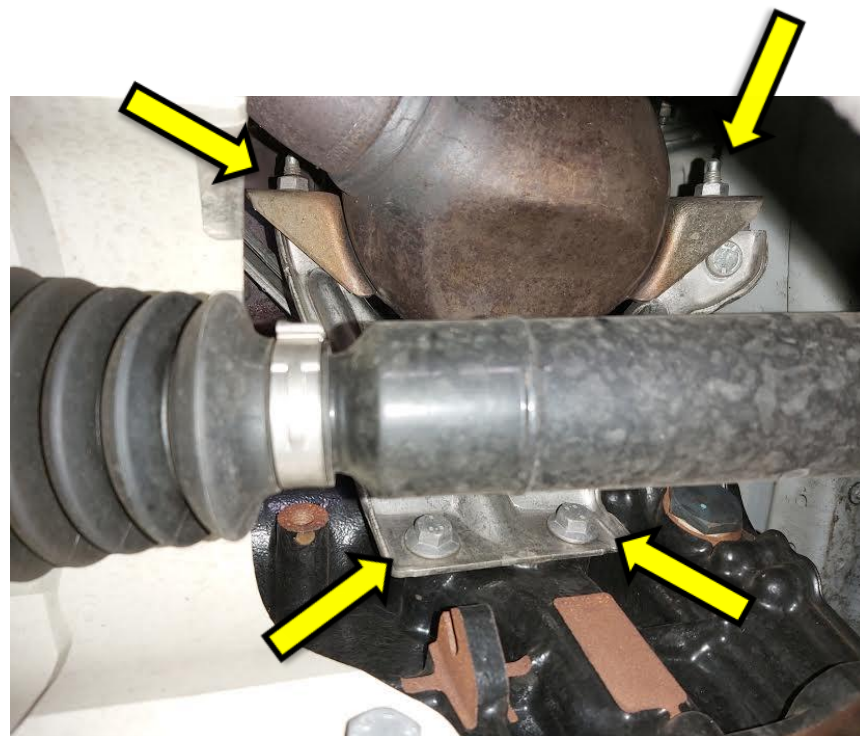
Spray lubricant on the clamp bolts, Undo the 2 x 13mm nuts and slide clamp towards the rear of the Vehicle





Step 3

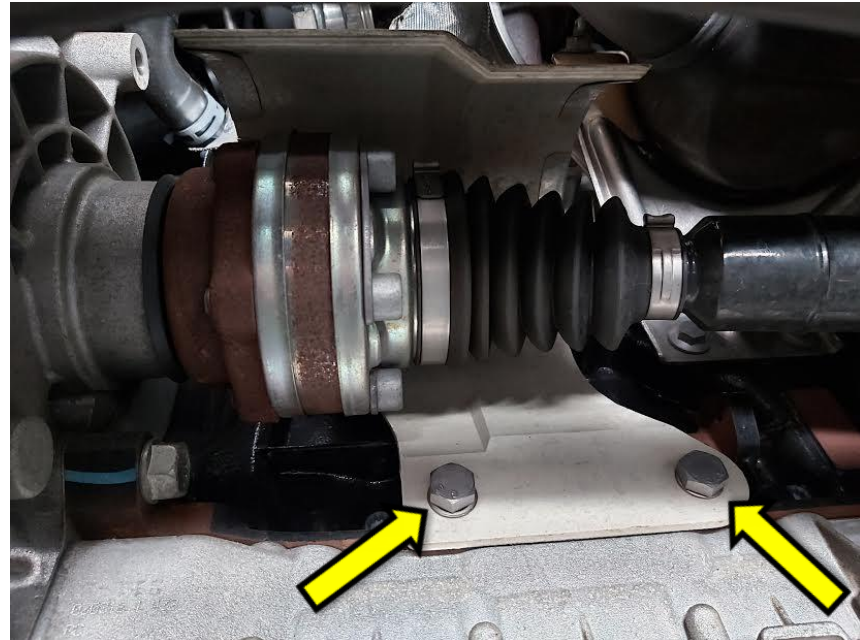
Undo the 2 x 13mm nuts and 2 x 13mm bolts and remove support bracket.





Step 4

Undo the 2 x 16mm bolts and remove drive shaft shield.





Step 5

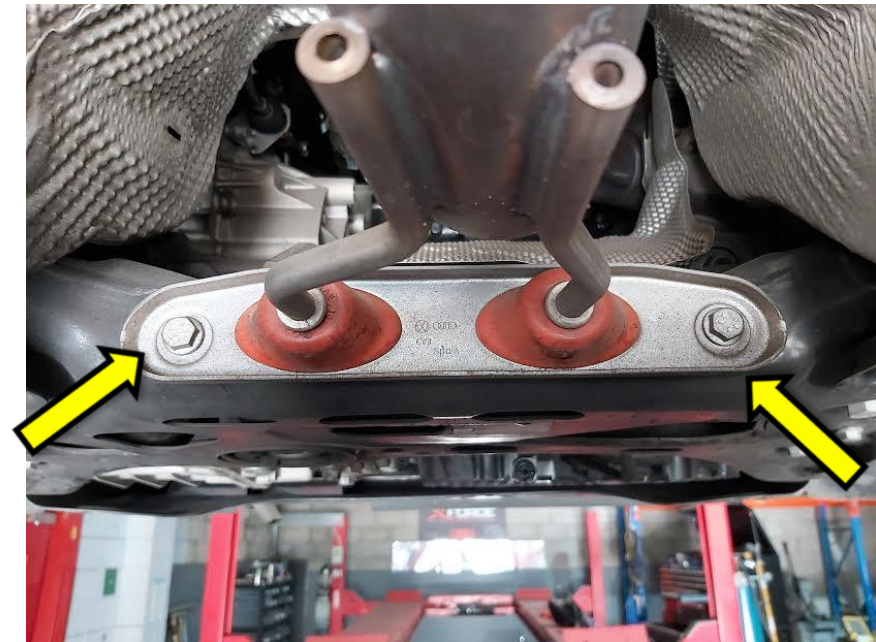
Undo the 4 x 13mm bolts and remove the steel brace.





Step 6

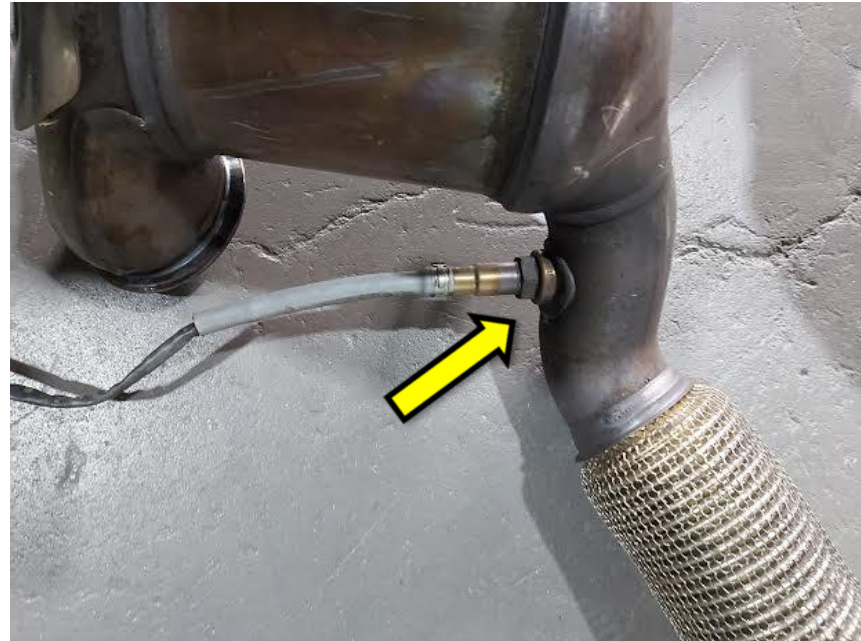
Undo the 2 x 13mm bolts at exhaust mount on the subframe.





Step 7

Remove the factory down pipe from the
Vehicle the remove the O2 sensor





Step 8

Assemble the Xforce down pipe on the bench or floor Including O2 sensor.

Gather all parts needed for installation.





Step 9

Fit the Xforce down pipe into the Vehicle and put the 2 x 13mm bolts into the sub frame exhaust hanger to hold the down pipe in place.

Slide the joining clamp forward to locate the down pipe and cat back (**DO NOT TIGHTEN**) and refit the brace with the 4 x 13mm bolts.





Step 10

Lower the hoist and fit the V Band clamp joining the downpipe and turbo and tighten 6mm Allen bolt. Also refit O2 wire into the 4 holders and plug it back in.





Step 11

Raise hoist, refit the drive shaft shield with the 2 x 16mm bolts





Step 12

Tighten Clamp at Down pipe and Cat Back and check all clearances.





Step 13

Drive vehicle for 10mins, Return to **Step 9**, retention all nuts, bolts and enjoy the driving experience your new Xforce System provides.

You may need to Tune the Vehicle after installation of this down pipe due to possible engine light for rear O2 sensor parameters and rich fuel mixture

Note: When you first start your vehicle after the installation of your new XFORCE Performance Exhaust System, there may be some smoke and fumes coming from the system. This is a protective oil based coating used in the manufacturing of mandrel bent performance exhaust tubing. This is not a problem and will disappear within a very short period of time after the exhaust has reached normal operating temperatures.